



PLANNING GUIDE

London Global Gateway



THE UNIVERSITY OF
NOTRE DAME
(USA) IN ENGLAND

Welcome



As Notre Dame's largest Global Gateway, London offers visitors impressive programming, ample space, and valuable connections for academic pursuits. And while the opportunities in the city are seemingly limitless, London also serves as a springboard to all of Europe.





Situated just off Trafalgar Square,

the London Global Gateway is perfectly positioned to host gatherings ranging from small community meetings to large academic lectures that convene audiences from across Europe. In line with the University's commitment to civil discourse, the London Global Gateway aspires to be a hub for thoughtful discussion and debate, and can accommodate groups large and small.

Located in historic Marian Kennedy Fischer Hall, the Gateway boasts elegant features alongside modern amenities that are certain to make each visit a success.



Trafalgar Hall



Capacity 120 theater style

First floor

Trafalgar Hall is the London Global Gateway's largest lecture hall and event space. It boasts beautiful period features as well as abundant natural light, making it a popular venue for events and conferences. It is equipped with large monitors, a soundboard, microphones, and a lectern.

The room seats up to 120 people in a theater-style format, which works well for lectures, panel discussions, and performances. It can also be rearranged in a variety of layout options to suit roundtable discussions, meetings, and receptions.

Trafalgar Hall has an adjoining classroom that can be used for refreshment breaks and receptions.

Classrooms



Capacity 40

All floors

The London Global Gateway has several adaptable classrooms fully equipped with AV capabilities including whiteboards, visualizers, and projection systems. Primarily used as teaching spaces, these rooms can accommodate conferences, presentations, lectures, and other gatherings.



Senior Common Room

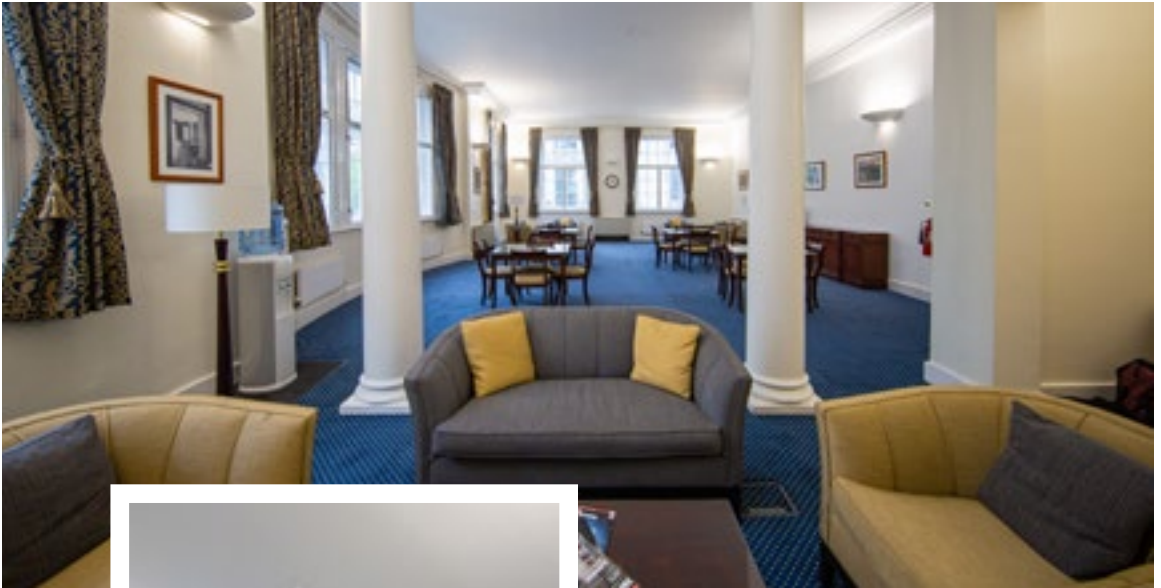
Capacity 75 reception

Ground floor

An impressive space with a definite period feel, the Senior Common Room is an elegant setting for meetings, social events, and receptions of up to 75 people. Equipped with a grand piano, the room is also perfect for musical recitals. The Senior Common Room can be booked on its own or in conjunction with other spaces.



Piccadilly Room



Capacity 75 reception

Second floor

The Piccadilly Room has beautiful period features and plentiful natural light, making it a welcoming and impressive setting for meals and receptions. Used primarily as a study space for law students, the Piccadilly Room's availability is limited.

Booking Information

Applications must be made at least three months in advance of the program date. Proposals will be subject to review based on availability and alignment with the University's mission.

Catering: The London Global Gateway has a list of preferred caterers who offer a wide range of styles and price points to suit any event and budget. Catering requirements must be submitted at the time of booking.

Audiovisual: The London Global Gateway is fully equipped with audiovisual, projection, and WiFi technology. If additional AV is required, local companies can be engaged at an additional cost.

To submit a proposal for a conference or event, please visit london.nd.edu. Submissions for proposed programming should be made at least three months in advance of the start date.



Location

The London Global Gateway is situated just off Trafalgar Square, next to the National Gallery's Sainsbury Wing.

GETTING TO THE LONDON GLOBAL GATEWAY

London is served by five main airports. There are airport transfer options to suit all budgets, including taxi services, Underground, rail, and coaches.

Visit tfl.gov.uk to view London's transportation options.



**The University of Notre Dame (USA)
in England**

1-4 Suffolk Street
London
SW1Y 4HG
United Kingdom

london.nd.edu

Phone: +44 20 7484 7800



The University of Notre Dame (USA) in England is hosting the services of the London Global Gateway.